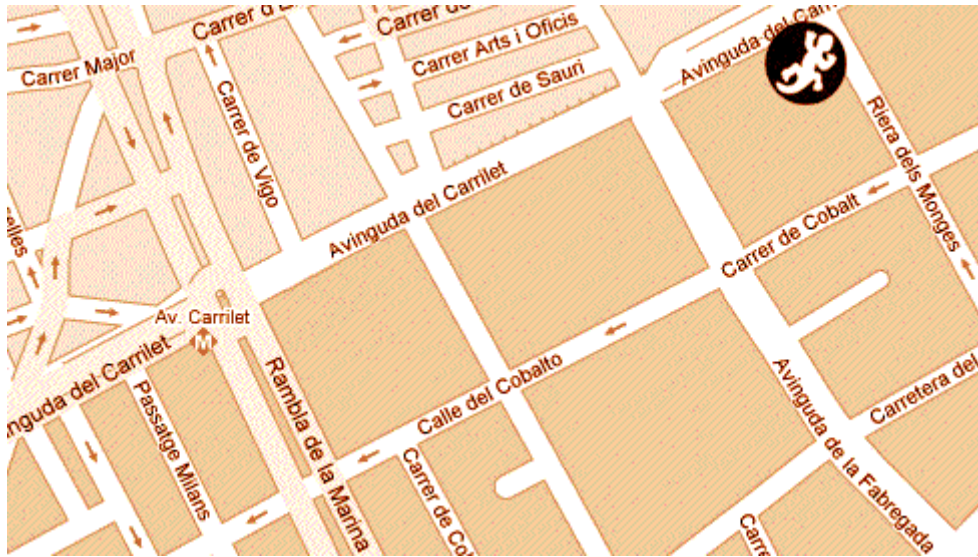




DATOS

Dirección: Av. Carrilet, 235 – L'Hospitalet - Barcelona



Transportes: A un radio de 200 mts., se encuentran dos paradas de la línea 1 del metro (Av. Carrilet y Rambla Just Oliveras), diferentes paradas de autobús, una parada de los Ferrocarrils Catalans y la estación de Renfe.

Aforo: 800 personas

Local: 1000 m2

Escenario: 50 m2

Servicios:

- Entradas Online.
- 2 Camerinos perfectamente acondicionados (sofás, mesas, nevera...) que incluyen baño privado con ducha y agua caliente.
- Acceso directo desde la calle.
- Acceso privado al escenario.
- Conexión wifi limitada.
- Estudio de grabación, conectado con el escenario.

Contactos:

- Programación: Oli@salamandra.cat
- Comunicación: isa@salamandra.cat
- Jefe técnico: ula@salamandra.cat
- Telf: 93.337.06.02
- Web: www.salamandra.cat
- Imágenes Salamandra/tour virtual: <https://goo.by/VSNCl>

RIDER TÉCNICO

P.A.

- 12 QSC Wideline 10 Model WL2102w (line array) 6 por lado
- 4 sub QSC Wideline Model WL218-sw
- 4 sub QSC GP212-sw
- 35.000w amplificadores con 4 x QSC PL380 class D + QSC PL230

CONTROL EXTERIOR

- 1 mesa digital Venue D-Show Profile (digidesign)
- Intercom Clear.com MS – 200C
- Manguera analógica 64+16

CONTROL MONITORES

- Manguera analógica 64+16 :
 - to F.O.H. control
 - to monitor control
- Mesa monitores Digidesign SC48
- 10 monitores HPR122i 12" 2-vías autoamplificados
- Drum field QSC HPR152F+sub QSC HPR151i
- Side field QSC MD-f152

MICROFONÍA

- 1 x AKG 112
- 2 Shure sm 52
- 6 x SM 81
- 1 x Shure SM 87 Beta
- 10 x Shure SM 58
- 3 x inalámbricos Audio-technica 3000a series
- 1 x Shure SM 58 Beta-A
- 10 x Shure SM 57
- 4 x Sennheiser E904
- 3 x Sennheiser E906
- 4 x Shure SM 98 A
- 2 x Shure SM 91
- 1 x Shure SM 94
- 4 x D.I. BSS AR-133
- 3 x D.I. BSS AR-116
- 4 x D.I. Behringer ULTRA-DI DI100

No se podrá modificar el sistema de P.A., sidefields, etapas y procesador.

Responsable sonido: Ula (ula@salamandra.cat)

Responsable luces: Jorge (superchanix@hotmail.com)

Telf.: +34 933370602

Horario oficina: de 10:00 a 14:00

RIDER ESTUDIO GRABACIÓN

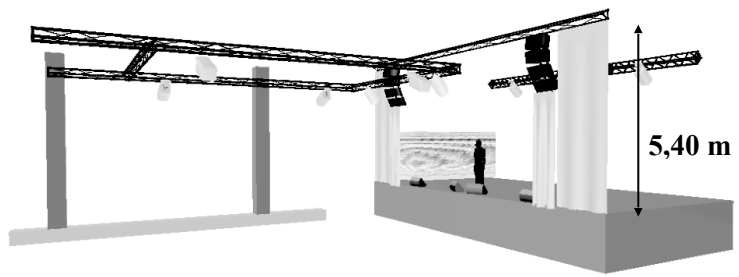
AUDIO

- MESA DIGITAL DIGIDESIGN SC48.
- COMPRESOR ESTEREO MANLEY VARIABLE MU
- 2 PREVIOS MANLEY VOXBOX
- 2 PREVIOS AVALON VT 737 SP.
- 2 COMPRESORES ADL 1000.
- PREVIO 2 CANALES AEA
- TC ELECTRONIC SYSTEM 6000 (4 ENGINE SOUND PROCESSOR).
- MANLEY EQUALIZER - MASSIVE/PASSIVE.
- AVALON EQUALIZER - AD 2055.
- ORDENADOR IMAC 27, CON PROTOOLS 10
- 2 PROTOOLS HD 192 INTERFACE.
- CONVERTOR AD / DA APOGEE PSX 100.
- LOUD-SPEAKER PMC IB 1.
- NEAR SPEAKER PMC LB1.
- SPEAKER YAMAHA NS 10
- CD TASCAM – CD450.
- DAT FOSTEX D5.
- MINI-DISC SONY.
- CASSETTE TASCAM 112R MKII.
- DIRECT BOX ADL 300G.
- AFINADOR TONEWORKS.

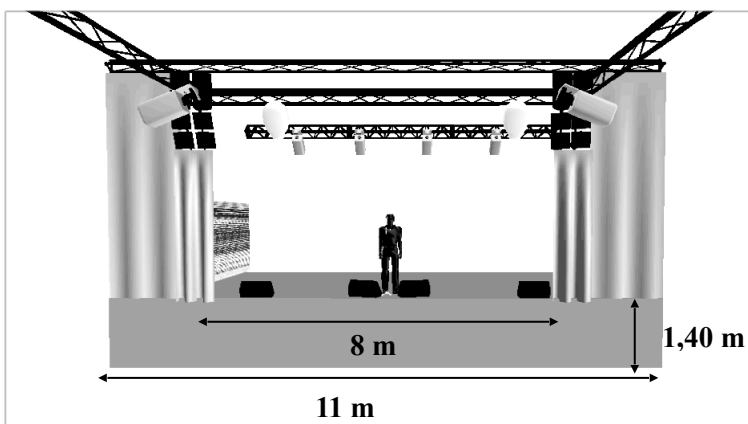
MICROFONÍA

- GROOVE TUBE A3.
- AEA R92 (MICRO DE CINTA)
- AKG C414.
- AKG D112.
- LANGEVIN.
- SENHEISER 906
- SENHEISER 904
- SHURE SM 52
- AKG C451 + CK1.
- SHURE SM 91
- SHURE SM 57.
- SHURE SM 58.
- SHURE SM 81.
- SHURE SM 94.
- SHURE SM 98

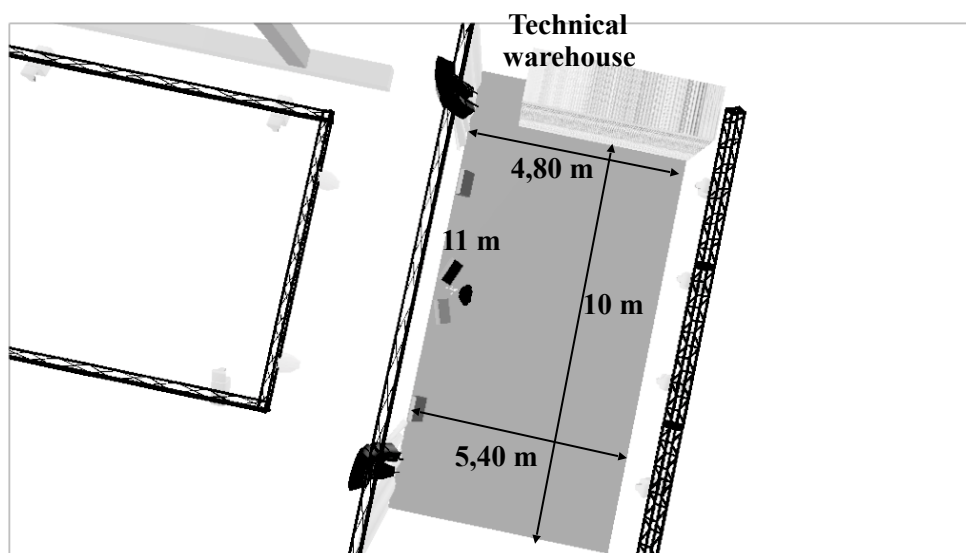
Vista lateral escenario



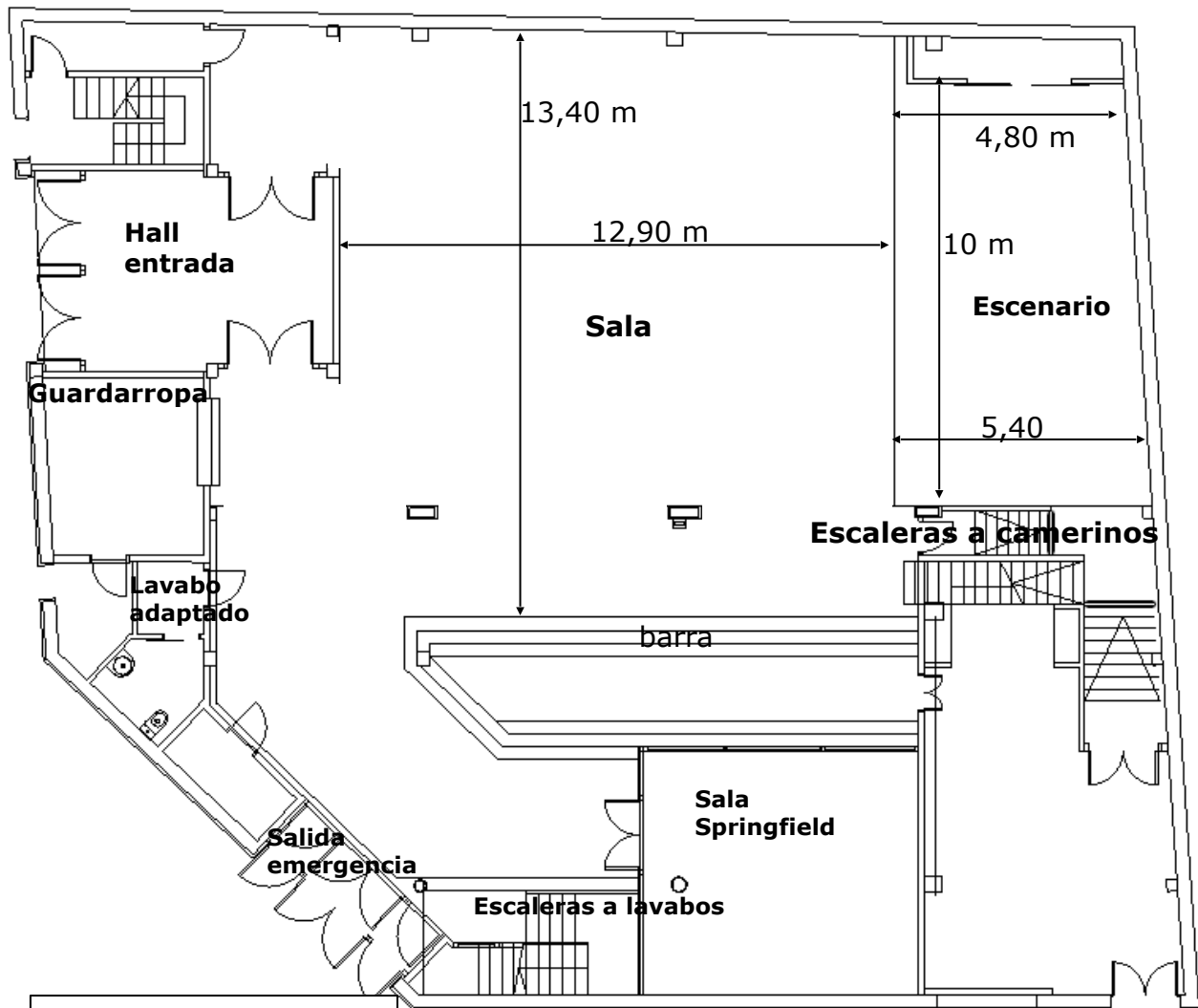
Vista frontal escenario



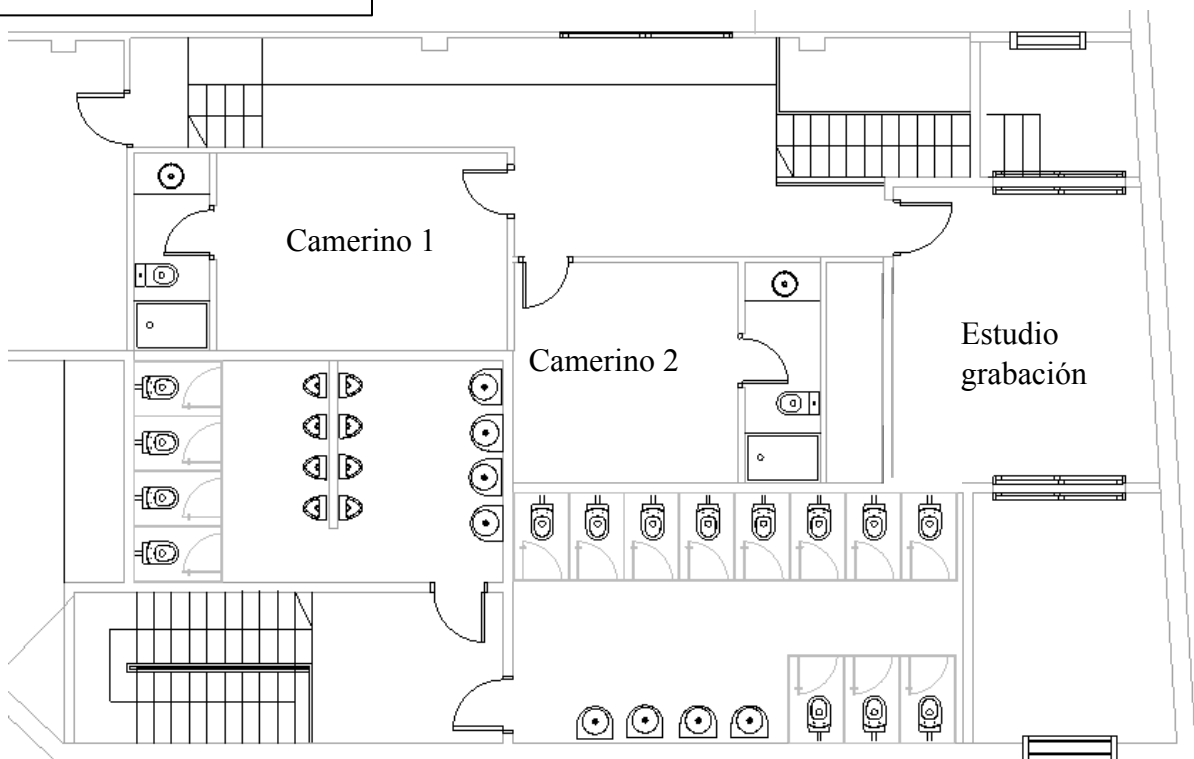
Vista aérea escenario



Plano planta baja



Plano primera planta

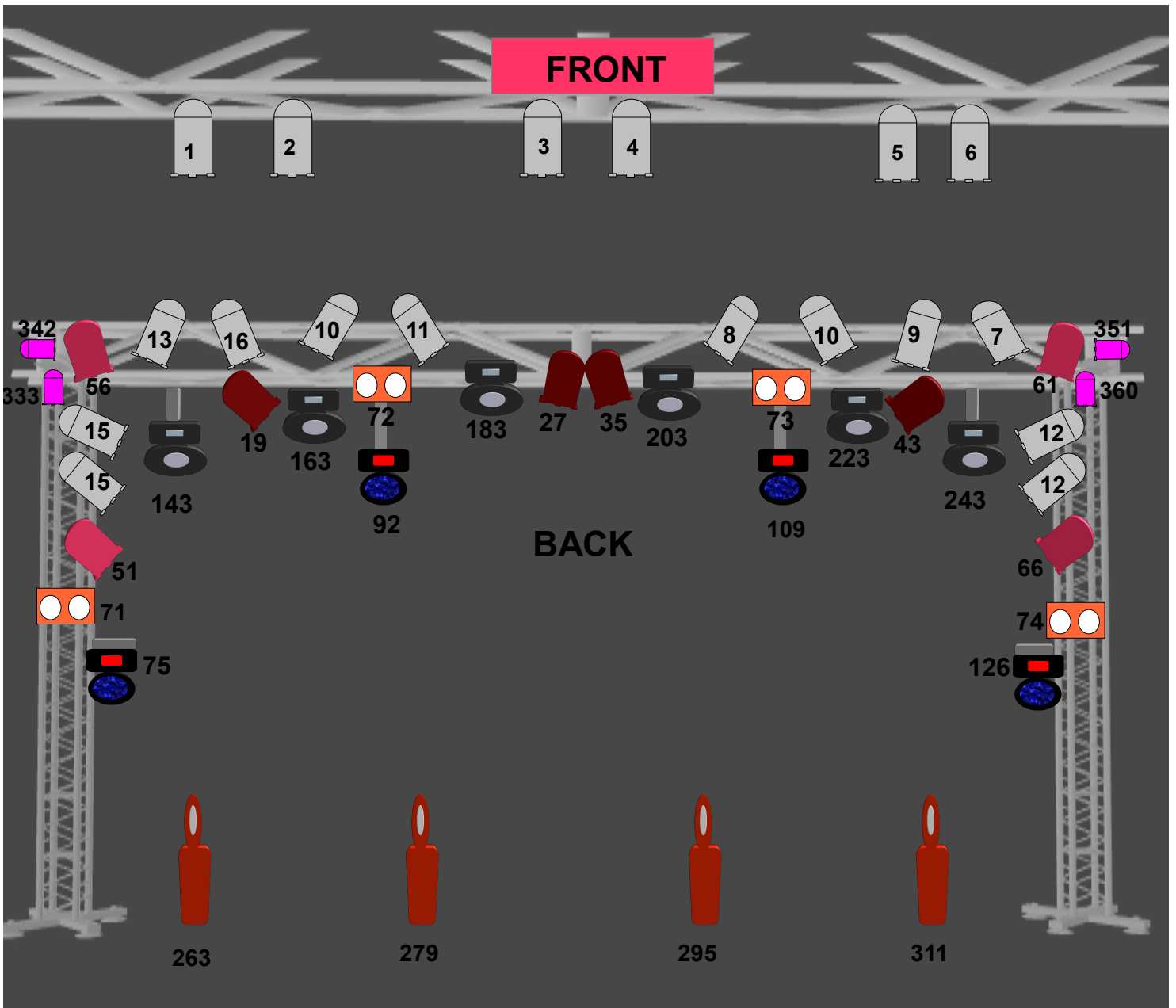


RIDER ILUMINACIÓN


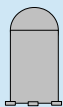
- Mixer Avolites Titan Tiger Touch II
- 6 PR Lighting XRled 300 Spot
- 4 Robe Scan XT 575
- 12 Projector Par 64 1000 W. (on the back truss)
- 8 Par Led SHOWTEC LED PAR 64 (on the back truss)
- 6 Projector Par 64 1000 W. (on the front truss)
- 4 Wash Led PR Lighting XLed 336 Beam
- 2 Color wave led moving bar FutureLight
- 4 Junior Par Led
- 4 Blinders dmx Showtec 2L
- 1 Hazer Smoke Factory 2
- 2 Hazer Martin Magnum 2500 HZ
- 2 Strobo Dmx


LUCES PISTA


- 4 Pr lighting xled 2007 beam
- 8 Junior par led
- 8 Led Bar ProLight
- 3 Video Projectors
- 12 Pr lighting xled 250 spot





Stage Line DMX :1


 dimmer
DMX 01  18 CH


 4 showtec led par short Q4-18 8ch
DMX 19-27-35-43


 4 par led
Dmx 51-56-61-66 R-G-B-DM-STB


 4 cegadoras dmx
DMX 71-72-73-74


 4 pr lighting xled 336 Beam mode extended
DMX 75-92-109-126
Library avolites = pearl river xled 336 Beam


 6 pr lighting xr led 300 spot
Mode standard 20ch
DMX 143-163-183-203-223-243
Library avolites = pearl river

 4 Robe scan xt 575 Mode 1
DMX 263-279-295-311

 2 STROBO 2CH dm-strb
DMX 327-329

Smoke factory 2 2CH fog&fan
 **DMX331**

 4 pr lighting junior par-36 7*10 9ch
Library avolites = pear river JNR 8016
DMX 333-342-351-360

 2 Futurelight color wave led moving bar
DMX 370-391

↑ Escenario stage ↑

