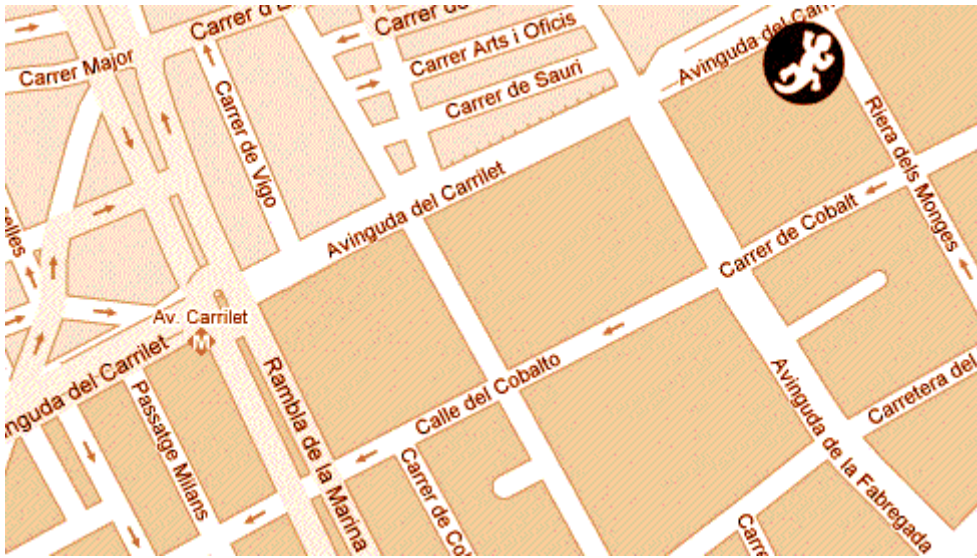




# DATA

**Address:** Av. Carrilet, 235 – L'Hospitalet - Barcelona



**Transports:** There are very near two underground stations (Av. Carrilet and Rambla Just Oliveras), different bus stops and Ferrocarrils Catalans station and a RENFE Station.

**Size:** 1000 m<sup>2</sup>

**Stage:** 50 m<sup>2</sup>

## **Services:**

- Online tickets.
- 2 dressing rooms perfectly conditioned (sofas, tables, refrigerator...), which includes a private bathroom with shower and hot water.
- Private access from the street
- Private access to the stage
- Wifi.
- Recording Studio, connected with the stage.

## **Contacts:**

- Production manager: [Oli@salamandra.cat](mailto:Oli@salamandra.cat)
- Press and communication: [isa@salamandra.cat](mailto:isa@salamandra.cat)
- Technical manager: [ula@salamandra.cat](mailto:ula@salamandra.cat)
- Telf: 93.337.06.02
- Web: [www.salamandra.cat](http://www.salamandra.cat); [www.casadelamusica.cat](http://www.casadelamusica.cat)
- Virtual Tour: <https://goo.by/VSNCl>

## TECHNICAL RIDER

### P.A.

- 12 QSC Wideline10 Model WL2102w (line array) 6 Each side
- 4 sub QSC Wideline Model WL218-sw
- 4 sub QSC GP212-sw
- 35.000w amplification class D with 4 QSC PL380 + 1 PL230

### FOH CONTROL

- 1 digital mixing console Venue D-Show Profile (digidesign)
- Intercom Clear.com MS – 200C
- Analog Snake 64+16

### ON-STAGE FIELDS CONTROL

- Analog snake 64+16
  - to F.O.H. control
  - to monitor control
- Monitors mixing console Digidesign SC48
- 10 monitors QSC HPR122i
- Drum field QSC HPR152F+sub QSC HPR151i
- Side field QSC MD-f152

### MICROPHONY

- 1 x AKG 112
- 2 x SM 52
- 6 x SM 81
- 1 x Shure SM 87 Beta
- 8 x Shure SM 58
- 3 x wireless Shure SLX 2458
- 1 x Shure SM 58 Beta-A
- 10 x Shure SM 57
- 4 x Sennheiser E904
- 3 x Sennheiser E906
- 1 x Sennheiser E604
- 3 x Shure SM 98 A
- 2 x Shure SM 91
- 1 x Shure SM 94
- 6 x D.I. BSS AR-133
- 3 x D.I. BSS AR-116
- 4 x D.I. Behringer ULTRA-DI DI100

**P.A., sidefields, power stages and signal processors equipment can't be modified**

Sound venue manager : Ula ([ula@salamandra.cat](mailto:ula@salamandra.cat))

Lights venue manager : Jorge ([superchanix@hotmail.com](mailto:superchanix@hotmail.com))

Office shedule 10:00-14:00

Phone number : +34 93 3370602

## **RECORDING STUDIO RIDER**

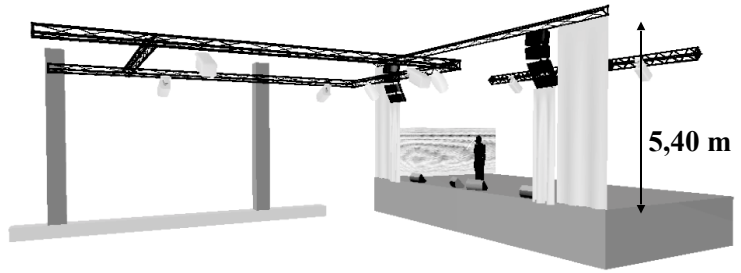
### **AUDIO**

- MIX CONSOLE DIGIDESIGN SC48.
- COMPRESSOR STEREO MANLEY VARIABLE MU
- 2 PREAMP MANLEY VOXBOX
- 2 PREAMP AVALON VT 737 SP.
- 2 COMPRESSOR ADL 1000.
- PREAMP 2 CHANEL AEA
- TC ELECTRONIC SYSTEM 6000 ( 4 ENGINE SOUND PROCESSOR ).
- MANLEY EQUALIZER - MASSIVE/PASSIVE.
- AVALON EQUALIZER - AD 2055.
- IMAC 27", WITH PROTOOLS 10
- 2 PROTOOLS HD 192 INTERFACE.
- CONVERTER AD / DA APOGEE PSX 100.
- LOUD-SPEAKER PMC IB 1.
- NEAR SPEAKER PMC LB1.
- SPEAKER YAMAHA NS 10
- CD TASCAM – CD450.
- DAT FOSTEX D5.
- MINI-DISC SONY.
- CASSETTE TASCAM 112R MKII.
- DIRECT BOX ADL 300G.

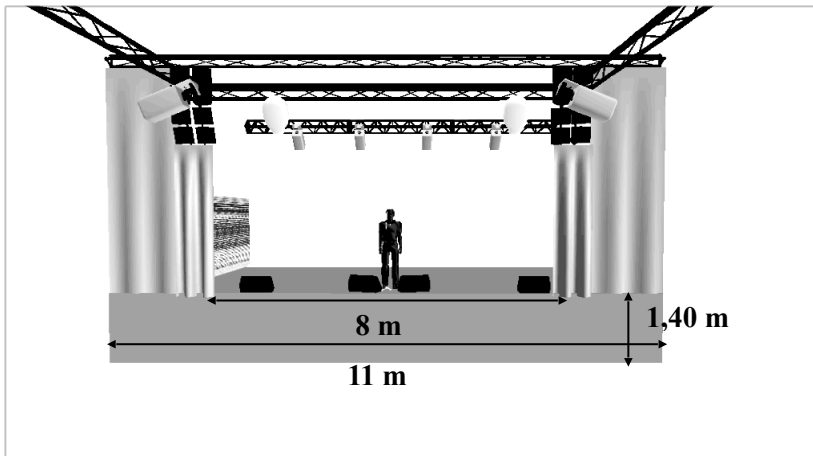
### **MICROPHONY**

- GROOVE TUBE A3.
- AEA R92
- AKG C414.
- AKG D112.
- LANGEVIN.
- SENHEISER 906
- SENHEISER 904
- SHURE SM 52
- AKG C451 + CK1.
- SHURE SM 91
- SHURE SM 57.
- SHURE SM 58.
- SHURE SM 81.
- SHURE SM 94.
- SHURE SM 98

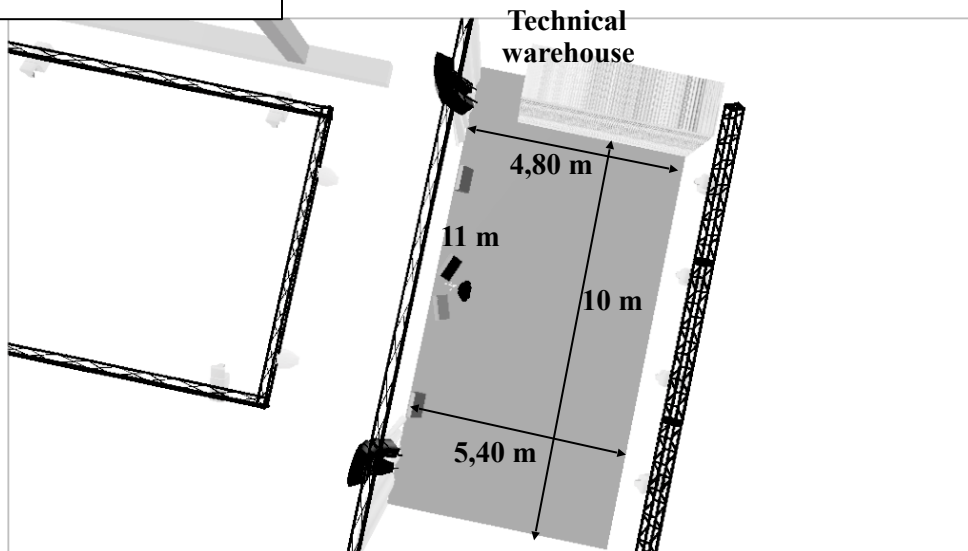
Lateral view



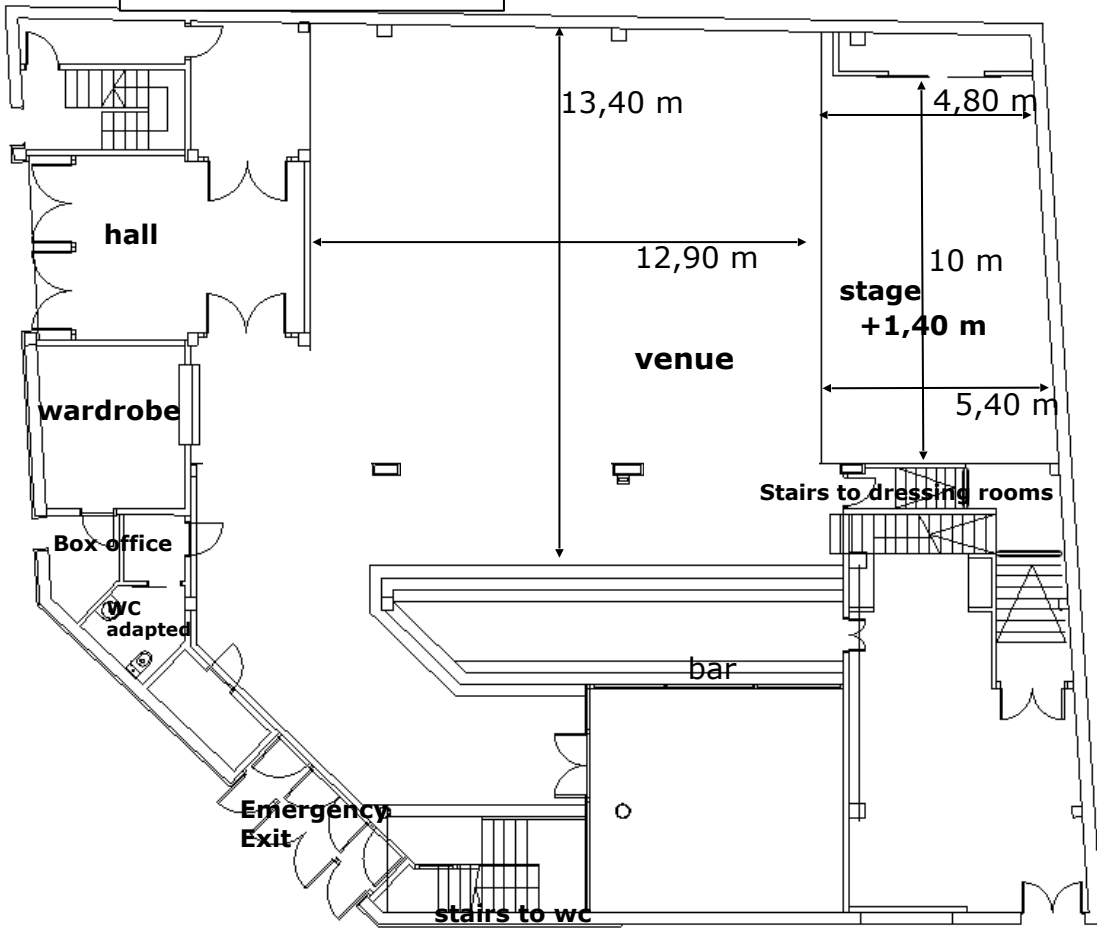
Front view



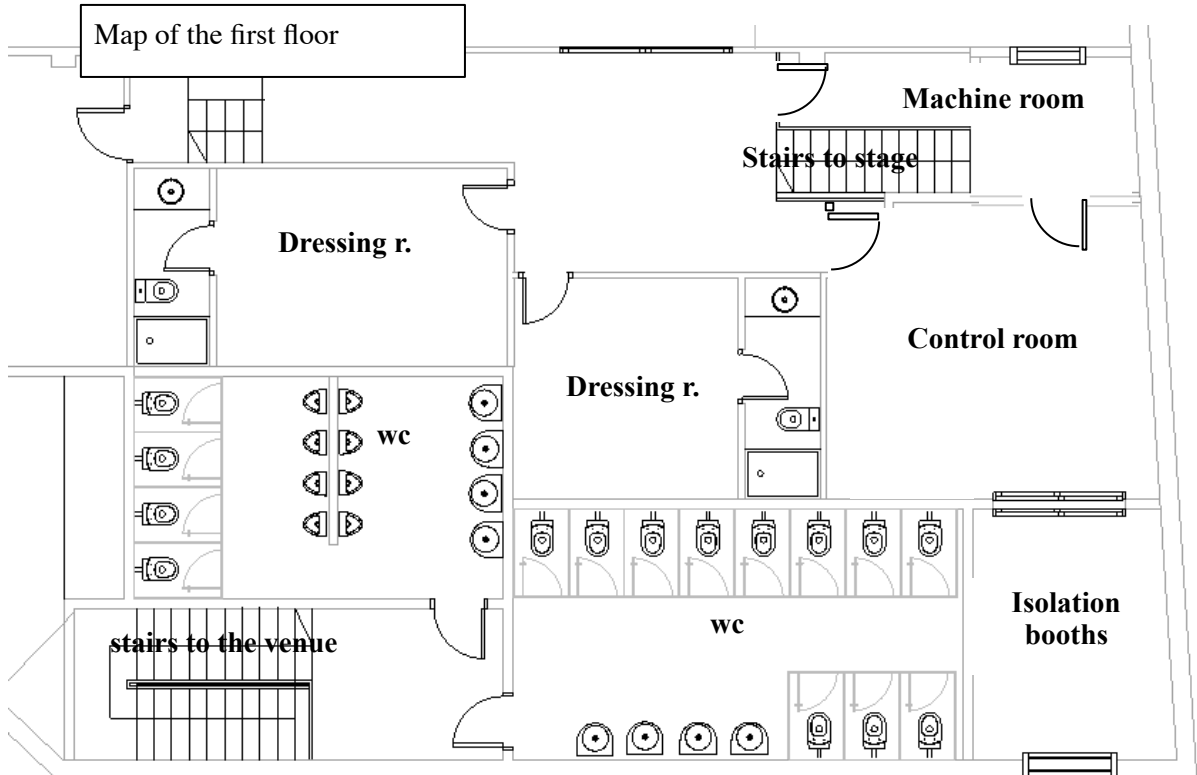
Air Vision



Map of the ground floor



Map of the first floor

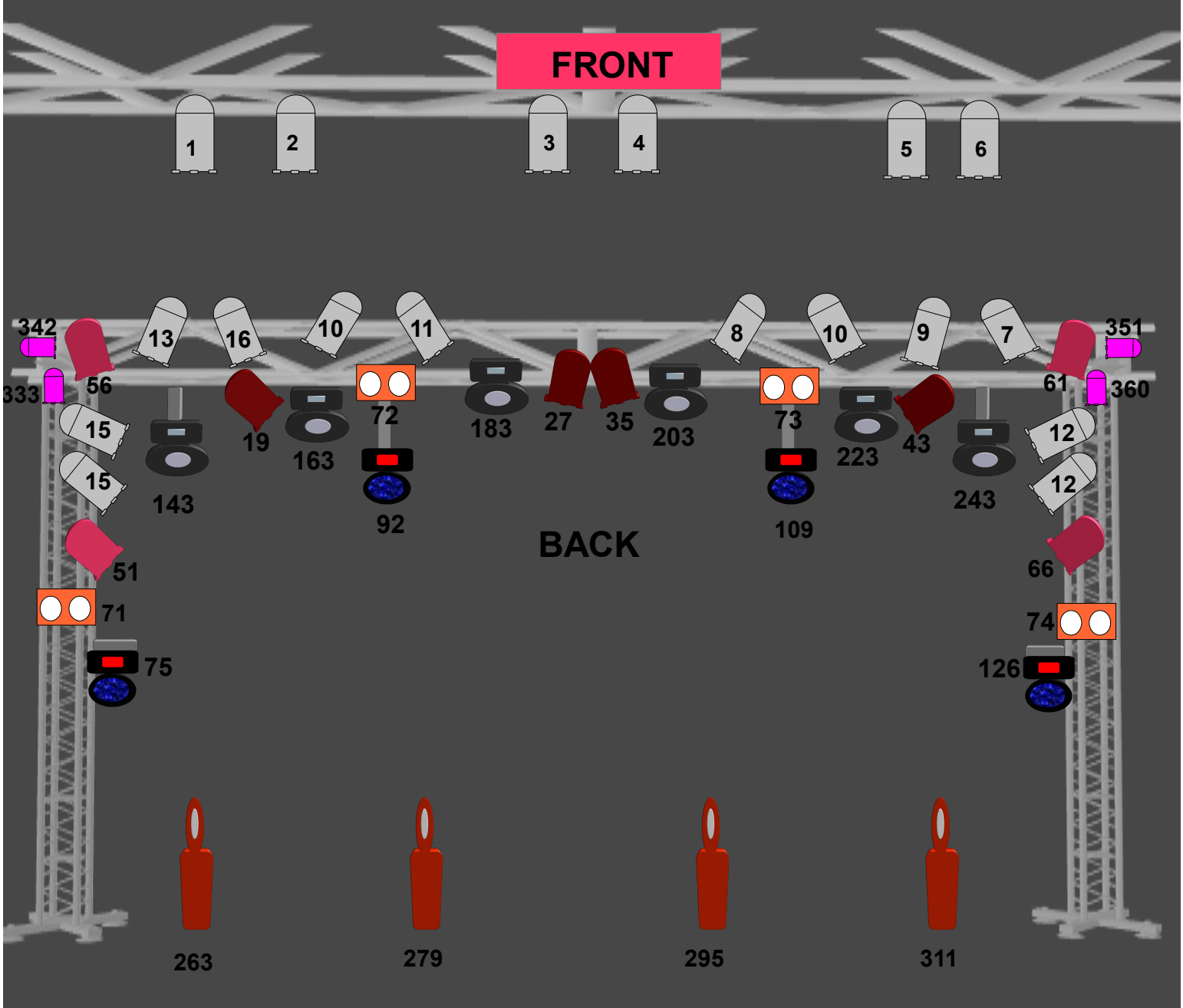


## **STAGE LIGHTING RIDER**


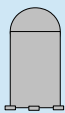







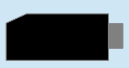


- Mixer Avolites Titan Tiger Touch II
- 6 PR Lighting XRLed 300 Spot
- 4 Robe Scan XT 575
- 12 Projector Par 64 1000 W. (on the back truss)
- 8 Par Led SHOWTEC LED PAR 64 (on the back truss)
- 6 Projector Par 64 1000 W. (on the front truss)
- 4 Wash Led PR Lighting XLed 336 Beam
- 2 Color wave led moving bar FutureLight
- 4 Junior Par Led
- 4 Blinders dmx Showtec 2L
- 1 Hazer Smoke Factory 2
- 2 Hazer Martin Magnum 2500 HZ
- 2 Strobo Dmx

## **DANCE FLOOR LIGHTING**

- 4 Pr lighting xled 2007 beam
- 8 Junior par led
- 8 Led Bar ProLight
- 3 Video Projectors (2 projecting to the left wall and 1 to the back wall of the stage)
- 12 Pr lighting xled 250 spot

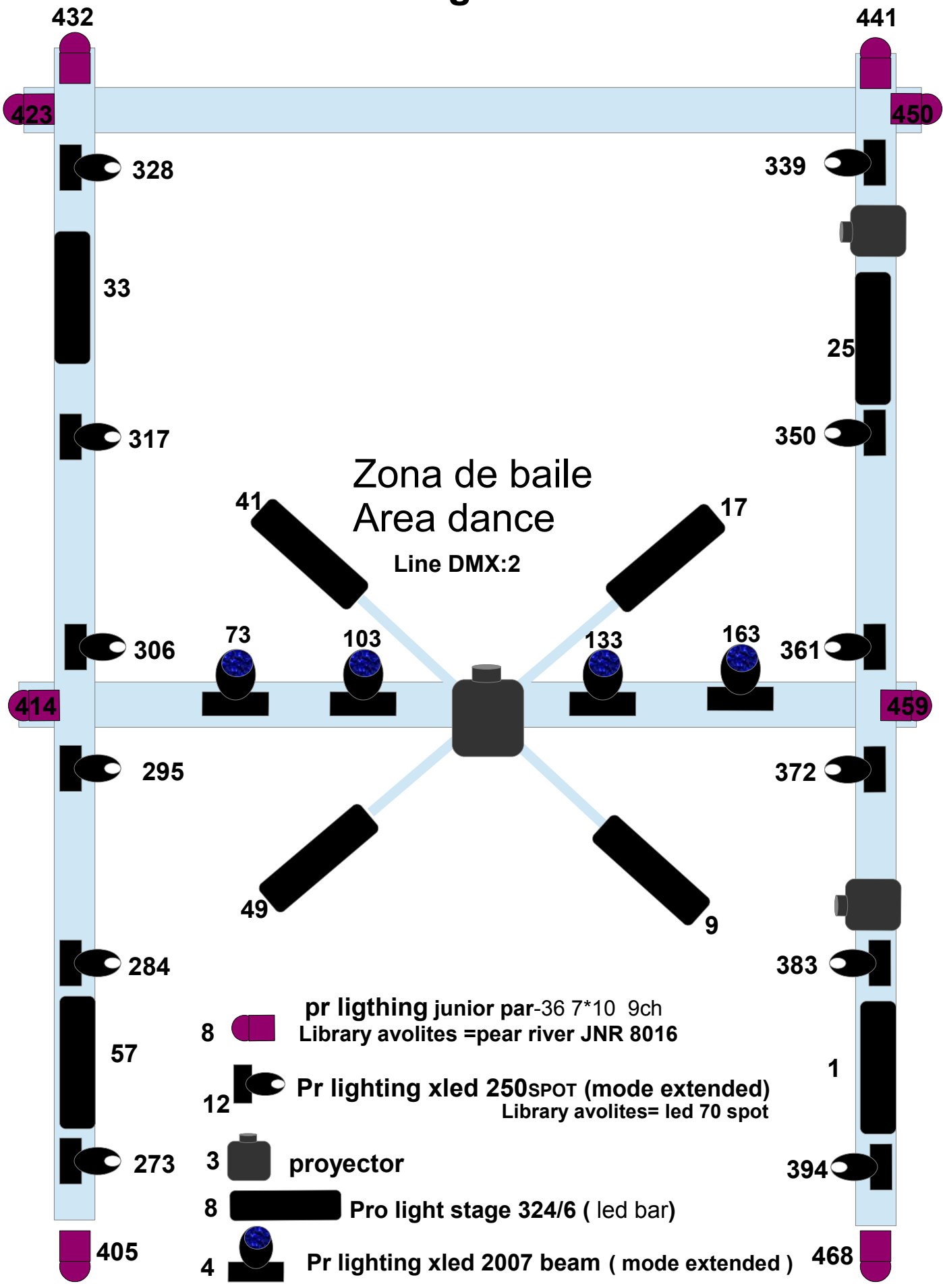







Stage  
Line  
DMX :1

-  dimmer  
**DMX 01**
-  18 CH
-  4 showtec led par short Q4-18 8ch  
**DMX 19-27-35-43**
-  4 par led  
**Dmx 51-56-61-66** R-G-B-DM-STB
-  4 cegadoras dmx  
**DMX 71-72-73-74**
-  4 pr ligthing xled 336 Beam mode extended  
**DMX 75-92-109-126**  
Library avolites = pearl river xled 336 Beam
-  6 pr ligthing xr led 300 spot  
Mode standard 20ch  
**DMX 143-163-183-203-223-243**  
Library avolites = pearl river
-  4 Robe scan xt 575 Mode 1  
**DMX 263-279-295-311**
-  2 STROBO 2CH dm-strb  
**DMX 327-329**
-  Smoke factory 2 2CH fog&fan  
**DMX331**
-  4 pr ligthing junior par-36 7\*10 9ch  
Library avolites = pear riverJNR 8016  
**DMX 333-342-351-360**
-  2 Futurelight color wave led moving bar  
**DMX 370-391**



↑ Escenario stage ↑



- 8  pr lighting junior par-36 7\*10 9ch  
Library avolites =pear river JNR 8016
- 12  Pr lighting xled 250SPOT (mode extended)  
Library avolites= led 70 spot
- 3  proyector
- 8  Pro light stage 324/6 ( led bar)
- 4  Pr lighting xled 2007 beam ( mode extended )